

# Dlx1 expression using the Allen Brain Atlas

Irene Argudo  
Instituto Cajal - Madrid

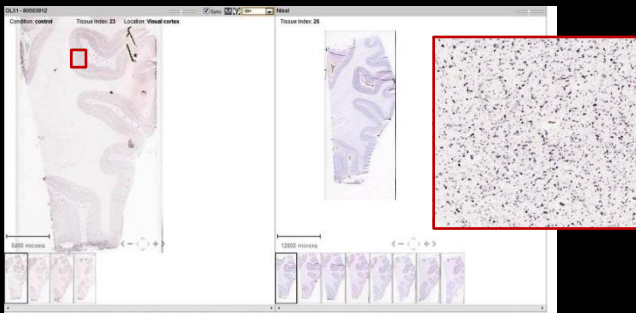
## Introduction

### DLX

- Family of homeodomain transcription factors related to a number of developmental features
- The family seems to be well preserved across species

## Experiments

### Dlx1 in Human Brain Atlas



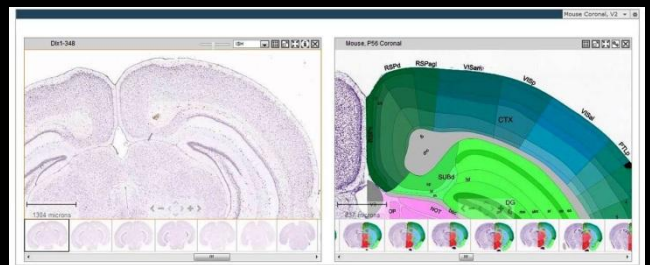
### Developing human brain



Age: 21 weeks

Lateral and Medial  
Ganglionic Eminence

### Dlx1 in Mouse Brain Atlas



### Developing mouse brain



Subpallium

## Conclusions

The expression of Dlx1 gene is high in the ganglionic eminence (Subpallium in mouse) during developing Human and Mouse brains. This expression using Allen Brain Atlas correlates with the literature, although there are some limitations like the Baylor experiments in mice.