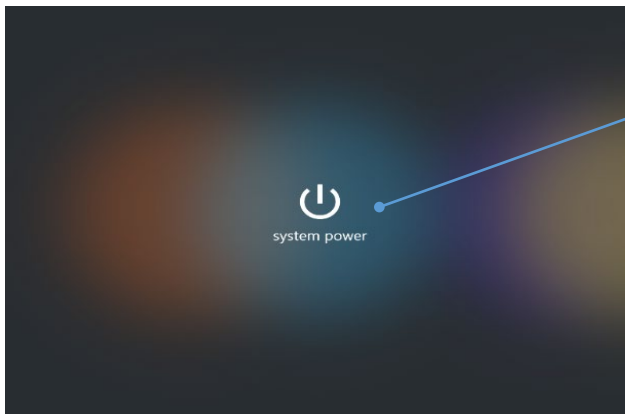


System start



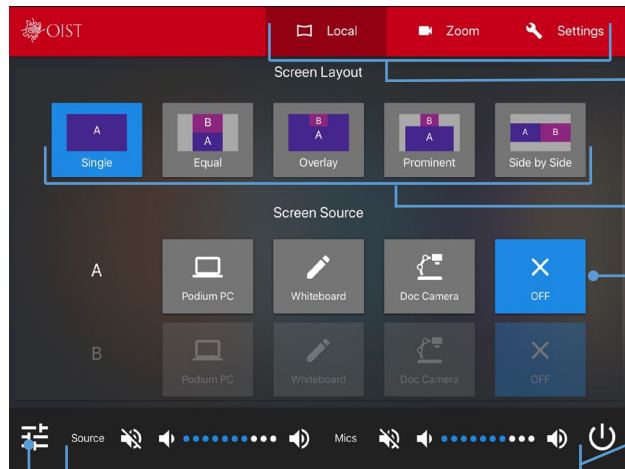
■How to turn on the system

Tap the power button.

The wait screen will be displayed during the system startup.

The main screen will be displayed when system has been booted completely.

Local



■Mode select(Local/Zoom) ■Volume adjustment

Choose the mode Local or Zoom, with tabs.

Choose the layout of video output for PJ screen.

Choose the displaying device.
(the one in blue if there are multiple outputting device setup).
Current outputted screen will be highlighted in blue.

Adjust the source / microphone volume.



Decrease the volume



Increase the volume

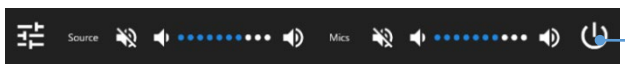


Switches mute ON / OFF. A red icon () appears during muting.

Displays the screen for adjusting the volume of all types.

■How to shutdown the system

Shutdown system



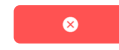
Press the power button () at the bottom of the screen.



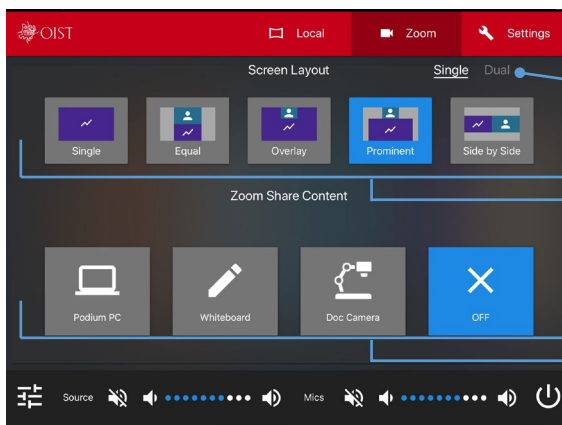
A confirmation message is displayed on the screen.



When you want to shut down the system.



If you want to cancel.



Zoom(Single mode)

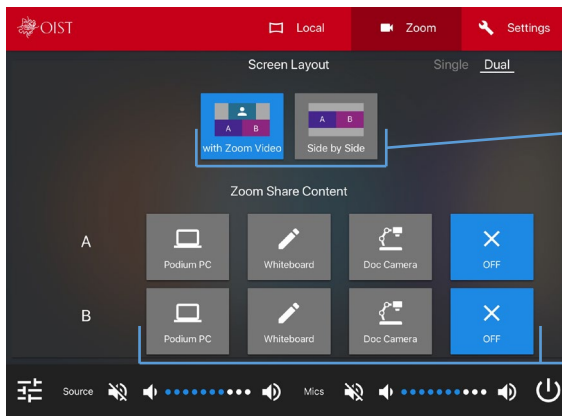
Choose the Zoom layout mode Single or Dual

Choose the layout of video output for PJ screen.

Choose the Share device.

Current outputted screen will be highlighted in blue.

***You must tap Share button on Zoom control Touch panel.**



Zoom(Dual mode)

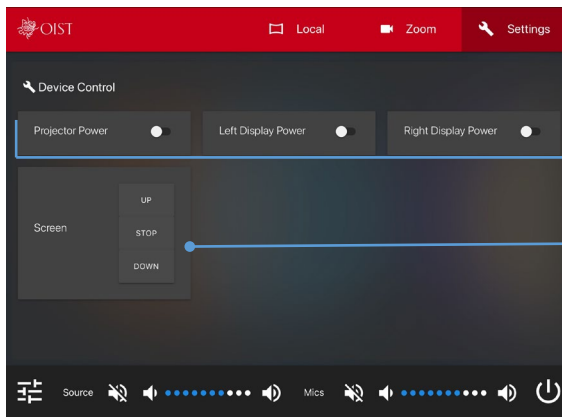
Choose the layout of video output for PJ screen.

You can choose two sources for Zoom Share.

Choose the Share device.

Current outputted screen will be highlighted in blue.

***You must tap Share button on Zoom control Touch panel.**



Device control

Controls the power of the displays and projector.

Controls the screen Up / Stop / Down.